

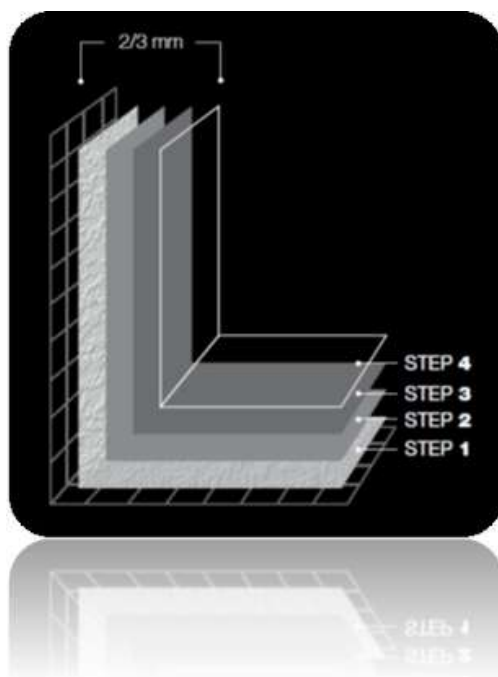
CREATIVO®

NEW SURFACE DESIGN



STEP BY STEP GUIDE

THE SYSTEM



STEP 1:



CREATIVO FONDO + CREATIVO MICROCEMENTO

in 2 coats Mixing ratio: 2:1 Waiting time: 8 h

Consumption rate: 1 kg/sqm per coat

STEP 2:



CREATIVO FINITURA + CREATIVO MICROCEMENTO

in 2 coats Mixing ratio: 2:1 Waiting time: 8 h

Consumption rate: 0.5 kg/sqm per coat

STEP 3:



CREATIVO PRIMER

in 1 coat Mixing ratio: ready to use Waiting time: 4-6 h

Coverage: 12.5 sqm/l per coat

STEP 4:



CREATIVO TOP A + B

in 2-3 coats Mixing ratio: 5:1 Waiting time: 6 h (max 24h)

Coverage: 14 sqm/l per coat



SURFACE PREPARATION

01

Surfaces need to be compact, sound, dry, clean and free from dust, grease, oil, etc. Old paint, if non-adherent or loose, must be removed.

Pay particular attention to residual oil and waxes in the joints between ceramic tiles.

02

In case the substrate is not solid, sound and compact, a consolidating coat of **CREATIVO PRIMER** should be applied. In case of exterior dusty and not solid substrates, consolidate with **RESINPOL** (solvent-based).

03

CREATIVO is a 2-3 mm system, in case of higher unevenness and/or different substrates, it is necessary to flatten the surface with **CREATIVO AUTOLIVELLANTE**, quick-drying self-levelling mortar.

04

In the basement, on ground floors, or wherever there's the risk of rising damp (above 4%) apply **CREATIVO BARRIERA** moisture barrier.

05

Control joints need to stay free to absorb any structural movement. Mark them in order to replicate them in the microcement system.

06

On particularly glossy and smooth surface perform shotblasting or scarification of the surface and apply 1 coat of **CREATIVO GRIP**



SYSTEM APPLICATION

STEP 1:

CREATIVO FONDO + CREATIVO MICROCEMENTO

1° COAT

Mix CREATIVO FONDO and CREATIVO MICROCEMENTO (on a 2:1 ratio) with a mixing drill for minimum 5 minutes or until a smooth, lump free, homogeneous mix is achieved.

Leave the mix to settle a few minutes and proceed with application.

Apply the product by stainless steel trowel avoiding the application of very thick layers per single coat.



In case of grout joints deeper or wider than 3 mm or on large surfaces, we recommend to embed a 90 g/m² fiberglass mesh in the first fresh coat of CREATIVO FONDO.

Consumption rate in this case will be approximately 1.2 – 1.3 kg/m²



After at least 8 hours sand the surface with an orbit sander using 60 / 80 G sandpaper and vacuum the dust.

We recommend the use of shoe covers during all the operations to avoid dirtying the surface.

Avoid wetting the surface before completing the system, stains or spots will affect the final result.





SYSTEM APPLICATION

STEP 1: CREATIVO FONDO + CREATIVO MICROCEMENTO

2° COAT



Apply the second coat of CREATIVO FONDO and CREATIVO MICROCEMENTO in the same way.

After at least 8 hours sand the surface by orbit sander using 60 / 80 G sanding discs and vacuum the dust.

STEP 2: CREATIVO FINITURA + CREATIVO MICROCEMENTO

1° COAT



Mix CREATIVO FINITURA, coloured in the desired colour, with CREATIVO MICROCEMENTO, using the same method used for FONDO.

Apply with special tool CREATIVO RED SPATULA making sure to achieve a smooth and even surface.

Do not press too heavily with the spatula to avoid black marks.

After 8 hours sand the surface by orbit sander using 120G sanding disc and vacuum the dust.





SYSTEM APPLICATION

STEP 2:

CREATIVO FINITURA + CREATIVO MICROCEMENTO

2° COAT



Mix CREATIVO FINITURA with CREATIVO MICROCEMENTO in the same way as the first.

Apply and design the surface with the specific technique in order to achieve the effect desired.

After at least 8 hours sand and vacuum the surface.

STEP 3:

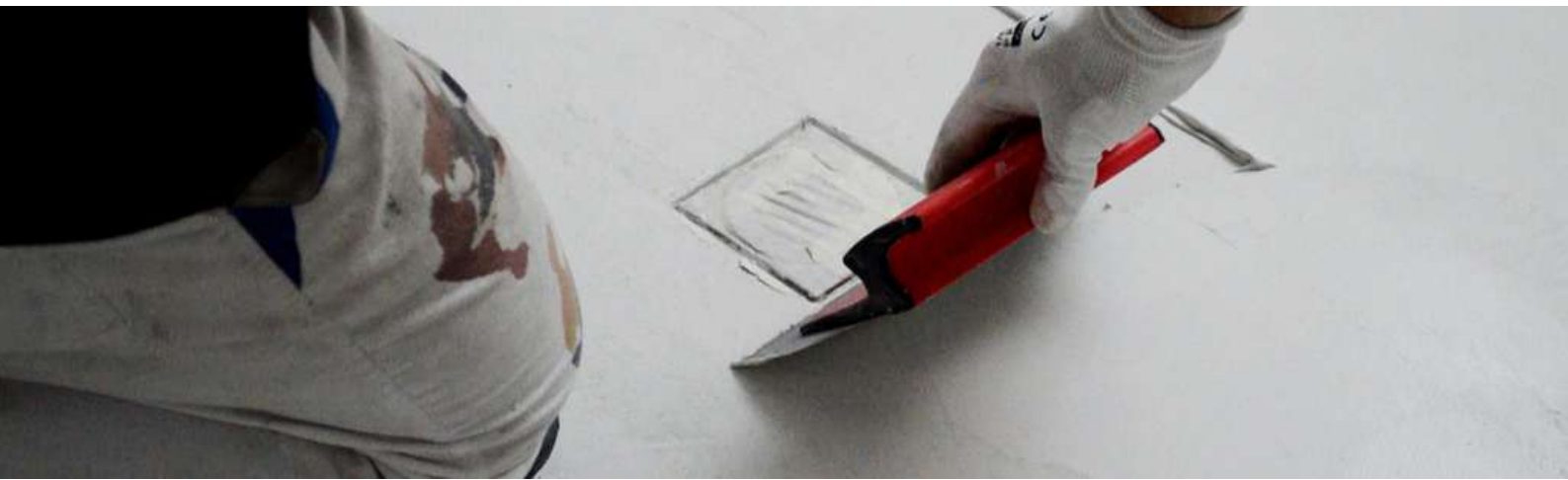
CREATIVO PRIMER



Apply one coat of CREATIVO PRIMER, ready-to-use, by roller, in order to regulate the absorbency of the following coat of CREATIVO TOP.

Wait at least 4 – 6 hours.





SYSTEM APPLICATION

STEP 4:

CREATIVO TOP A+B

1° COAT

Mix carefully COMPONENT A before use.

Add COMPONENT B (catalysis ratio: 1kg A + 0.2 kg B), mix well and apply with specific CREATIVO MOHAIR ROLLER taking care of applying homogeneously the product without leaving deposits.



Pay special attention to corners, edges and drains.

First coat can be diluted up to 10% with water.

For the 1st coat we recommend use of CREATIVO® TOP LUCIDO (glossy) to avoid roller marks



2° COAT

After at least 6 hours, and no later than 24 hours from the first coat, apply a second coat of CREATIVO TOP in the same method.

In case more than 24 hours have passed, it is necessary to sand the surface with thin grit sandpaper (250G and over) and vacuum before proceeding to the next coat.



CURING TIME & CLEANING



Wait **at least 24 hours** from the last coat before walking on the surface.

70% of the system chemical-physical performances are achieved in 3 days.

CREATIVO TOP will be **completely dry** and cured **after 7 days**.

For application of CREATIVO in exterior and in showers, sinks, etc. it is necessary to avoid prolonged water stagnation.

Make sure to create the right drainage slopes to provide for water flow.

It these cases or wherever there is the need for greater resistance, apply a third coat of CREATIVO TOP with double catalysis (2 components B for each Component A).

Full mechanical resistances are achieved after 28 days.

Wait at least 7 days before cleaning CREATIVO for the first time.

Remove any aggressive substance from the surface as soon as possible (wine, coffee, grease, oil, etc.). Avoid prolonged contact that could deteriorate the aspect of the surface.

Clean with ordinary detergents. Do not use a steam cleaner.

CREATIVO low dirt pick-up and resistance to moulds, alkaline and acid cleaning agents have been proven by the test performed to achieve the HACCP certification.





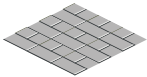
EACH SURFACE, A DEDICATED SYSTEM

01

Indoor horizontal surfaces with cement screed:

- 2 coats of CREATIVO FONDO
- 2 coats of CREATIVO FINITURA
- 1 coat of CREATIVO PRIMER
- 2 - 3 coats CREATIVO TOP

02



Indoor horizontal and vertical surfaces with ceramic tiles:

- 1 coat of CREATIVO GRIP
- 2 coats of CREATIVO FONDO
- 2 coats of CREATIVO FINITURA
- 1 coat of CREATIVO PRIMER
- 2 - 3 coats CREATIVO TOP

03

Indoor vertical surfaces without ceramic tiles:

- 1 coat of SMARTCOAT 0.4 mm
- 2 coats of CREATIVO FINITURA
- 1 coat of CREATIVO PRIMER
- 2 - 3 coats CREATIVO TOP

04



Outdoor horizontal surfaces and shower trays:

- 2 coats of CREATIVO BARRIERA
- 1 coat of CREATIVO FONDO
- 2 coats of CREATIVO FINITURA
- 1 coat of CREATIVO PRIMER
- 3 coats CREATIVO TOP with double catalysis



NB. This short guide is meant to assist you in the application of Creativo Microcement system, but it serves purely as a reminder. Before beginning application, we invite you to carefully read the TDS and Application Manual (available online) describing the correct surface preparation for different types of substrate and providing all detailed information concerning the application

KEEP IN TOUCH



We are always available to answer any question you may have on Creativo and other related products.



+39 0541 734086



mp@mp-paints.com



www.creativo-microcement.com

Thank you!